

Cabstrut Pipe Chart - Nominal Size / Outside Diameter Comparison


NOMINAL SIZE (NB)		CARBON STEEL PIPE - Outside Diameter (Ø) - (mm)	Cu-Ni PIPE Outside Diameter (Ø) - (mm) (ASTM B 88)
Inch	Metric (mm)		
1/8	3.2	10.2	-
1/4	6.4	13.5	9.5
3/8	9.5	17.2	12.7
1/2	12.7	21.3	15.9
5/8	-	-	19.1
3/4	20	26.9	22.2
1	25	33.7	28.6
1-1/4	32	42.4	34.9
1-1/2	40	48.3	41.3
2	50	60.3	54.0
2-1/2	65	76.1	66.7
3	80	88.9	79.9
3-1/2	90	101.6	92.1
4	100	114.3	106.3
5	125	139.7	131.7
6	150	168.3	157.7
8	200	219.1	208.5
10	250	273	260.5
12	300	323.9	312.1
14	350	355.6	363.7

**Low-Voltage PVC Cable Diameter / Mass - Copper Conductors PVC Insulated
PVC Bedded SWA PVC Sheathed 600/1000V Cables**

Approximate calculated dimension and nett mass per 100 metres				Cabstrut "Q" Clamp to suit
Rated area mm ²	Number of cores	Max. overall Ø mm	Nett mass kg/100m	
1,5	3	14,2	45	Q16
	4	15,1	50	Q16
	7	17,6	55	Q20
2,5	12	22,9	89	Q26
	3	16,1	52	Q20
4	4	16,9	60	Q20
	7	20,0	79	Q20/Q26
	3	17,5	67	Q20
6	4	19,4	76	Q20
	7	22,5	101	Q26
	3	19,6	79	Q16
6	4	20,9	91	Q16

Approximate calculated dimension and nett mass per 100 metres				Cabstrut "Q" Clamp to suit
Rated area mm ²	Number of cores	Max. overall Ø mm	Nett mass kg/100m	
10	3	21,9	99	Q26
	4	23,4	117	Q26
16	3	25,9	130	Q26/Q32
	4	27,9	177	Q32
25	3	26,9	184	Q32
	4	29,1	220	Q32
35	3	28,8	221	Q32
	4	32,5	273	Q40
50	3	33,2	287	Q40
	4	36,5	390	Q40
70	3	36,5	275	Q40/Q46
	4	40,2	484	Q46

Approximate calculated dimension and nett mass per 100 metres				Cabstrut "Q" Clamp to suit
Rated area mm ²	Number of cores	Max. overall Ø mm	Nett mass kg/100m	
95	3	41,3	491	Q46
	4	45,2	612	Q46
120	3	43,7	572	Q46
	4	47,9	727	Q52
150	3	47,4	691	Q52
	4	53,7	925	Q58
185	3	53,0	869	Q58
	4	58,7	1103	Q66
240	3	59,2	1076	Q66
	4	66,7	1372	Q70
300	3	62,8	1295	Q66
	4	71.1	1660	Q78



Split Clamps

- Standard finish galvanised (EG)
- Rubber Insert
- Pull strength 600kg
- Twist strength 8kg

Material/Finish:
Mild Steel Zinc-Electroplated (EG)

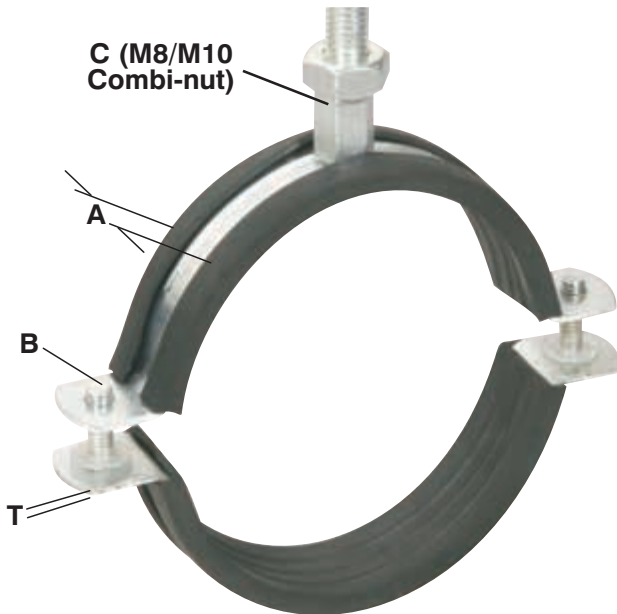
Working Temperature Range:
-40°C / +110°C

Pipe Clamp Sizes:
Diameter range stated is the suitable pipe O.D range
Safe Working Load (tensile) :
200 kg

Fire resistance:
Class B2 (DIN 4102)

Sound Reduction:
18 dB (A)

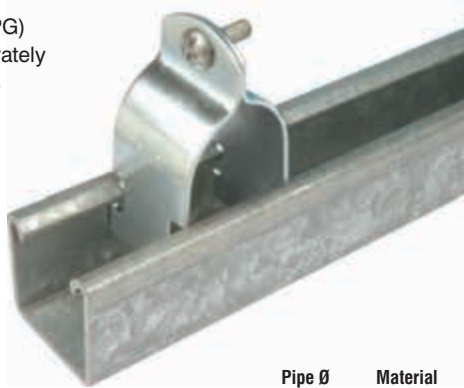
Rubber: EPDM Rubber
(Ethylene Propylene Diene Monomer (M-class) rubber)
Thickness : 4 -5mm



Product Code	Description	Unit	Clamp Thickness (T) (mm)	Clamp Width (A) (mm)	CH Screw Size (B) (mm)	Rod Connector Size (C)	Pipe Ø Clamping Range (mm)	Weight Kgs/Unit	Pack/Box Quantity	Weight Kgs Pack/Box	Design Load (Kgs) per Clamp	Unit Price
i0002104	SC/012-016 RUBBER LINED SPLIT CLAMP EG	Set	1.50	20	M6 x 20mm	M10 / M8	12 - 16	0.056	50	2.80	200	37.00
i0002105	SC/015-019 RUBBER LINED SPLIT CLAMP EG	Set	1.50	20	M6 x 20mm	M10 / M8	15 - 19	0.066	50	3.29	200	38.00
i0002106	SC/020-025 RUBBER LINED SPLIT CLAMP EG	Set	2.00	20	M6 x 20mm	M10 / M8	20 - 25	0.084	50	4.20	200	40.00
i0002107	SC/026-030 RUBBER LINED SPLIT CLAMP EG	Set	2.00	20	M6 x 20mm	M10 / M8	26 - 30	0.089	25	2.23	200	43.00
i0002108	SC/032-036 RUBBER LINED SPLIT CLAMP EG	Set	2.00	20	M6 x 20mm	M10 / M8	32 - 36	0.100	25	2.50	200	45.00
i0002109	SC/038-043 RUBBER LINED SPLIT CLAMP EG	Set	2.00	20	M6 x 20mm	M10 / M8	38 - 43	0.110	25	2.76	200	47.00
i0002110	SC/047-051 RUBBER LINED SPLIT CLAMP EG	Set	2.00	20	M6 x 20mm	M10 / M8	47 - 51	0.117	20	2.34	200	51.00
i0002111	SC/053-058 RUBBER LINED SPLIT CLAMP EG	Set	2.00	20	M6 x 20mm	M10 / M8	53 - 58	0.124	20	2.47	200	60.00
i0002112	SC/060-064 RUBBER LINED SPLIT CLAMP EG	Set	2.00	20	M6 x 20mm	M10 / M8	60 - 64	0.144	20	2.87	200	61.00
i0002113	SC/068-072 RUBBER LINED SPLIT CLAMP EG	Set	2.00	20	M6 x 20mm	M10 / M8	68 - 72	0.144	20	2.88	200	65.00
i0002114	SC/075-080 RUBBER LINED SPLIT CLAMP EG	Set	2.00	20	M6 x 20mm	M10 / M8	75 - 80	0.153	25	3.82	200	70.00
i0002115	SC/081-086 RUBBER LINED SPLIT CLAMP EG	Set	2.00	20	M6 x 20mm	M10 / M8	81 - 86	0.160	20	3.20	200	71.00
i0002116	SC/087-092 RUBBER LINED SPLIT CLAMP EG	Set	2.00	20	M6 x 20mm	M10 / M8	87 - 92	0.174	20	3.47	200	78.00
i0002117	SC/099-105 RUBBER LINED SPLIT CLAMP EG	Set	2.00	20	M6 x 20mm	M10 / M8	99 - 105	0.191	15	2.87	200	79.00
i0002118	SC/107-112 RUBBER LINED SPLIT CLAMP EG	Set	2.50	20	M6 x 20mm	M10 / M8	107 - 112	0.246	15	3.69	200	91.00
i0002119	SC/113-118 RUBBER LINED SPLIT CLAMP EG	Set	2.50	20	M6 x 20mm	M10 / M8	113 - 118	0.245	10	2.45	200	94.00
i0002120	SC/125-130 RUBBER LINED SPLIT CLAMP EG	Set	2.50	20	M6 x 25mm	M10 / M8	125 - 130	0.283	10	2.83	200	102.00
i0002121	SC/132-137 RUBBER LINED SPLIT CLAMP EG	Set	2.50	20	M6 x 25mm	M10 / M8	132 - 137	0.273	20	5.46	200	113.00
i0002122	SC/138-142 RUBBER LINED SPLIT CLAMP EG	Set	2.50	20	M6 x 25mm	M10 / M8	138 - 142	0.284	20	5.67	200	124.00
i0002123	SC/148-152 RUBBER LINED SPLIT CLAMP EG	Set	2.50	20	M6 x 25mm	M10 / M8	148 - 152	0.300	20	5.99	200	132.00
i0002124	SC/159-166 RUBBER LINED SPLIT CLAMP EG	Set	2.50	20	M6 x 25mm	M10 / M8	159 - 166	0.333	10	3.33	200	144.00
i0002125	SC/200-212 RUBBER LINED SPLIT CLAMP EG	Set	2.50	20	M6 x 25mm	M10 / M8	200 - 212	0.399	10	3.99	200	159.00
i0002126	SC/215-220 RUBBER LINED SPLIT CLAMP EG	Set	2.50	20	M6 x 25mm	M10 / M8	215 - 220	0.426	10	4.26	200	177.00
i0004134	SC/249-254 RUBBER LINED SPLIT CLAMP EG	Set	2.50	20	M6 x 25mm	M10 / M8	249 - 254	0.476	10	4.76	200	199.00
i0004135	SC/314-319 RUBBER LINED SPLIT CLAMP EG	Set	2.50	20	M6 x 25mm	M10 / M8	314 - 319	0.606	10	6.06	200	225.00

PIPE & CABLE CLAMPS
JULY 2021
Traditional 2/Piece Clamps

- Standard Finish: Galvanised (PG)
- Fasteners (EG) Supplied separately
- Design Load Safety Factor of 5



Product Code	Description	Unit	Pipe Ø Clamping Range (mm)	Material Thickness (mm)	Clamp Width (mm)	Fasteners Required (Not incl.in Unit Price)	Weight Kgs/Pair	Pack/Box Quantity	Weight Kgs Pack/Box	Design Load (Kgs) per Pair	Unit Price
i0008986	P2025 2PIECE CLAMP 8,5 - 10,0MM PG	Pair	8.5 - 10	1.60	32	i0001301 M6 x 20mm Gutter Bolt & Nut EG Required	0.048	50	2.40	180	17.00
i0008985	P1108 2PIECE CLAMP 10,5 - 12,5MM PG	Pair	10.5 - 12.5	1.60	32		0.051	50	2.55	180	17.00
i0008984	P2026 2PIECE CLAMP 11,5 - 13,5MM PG	Pair	11.5 - 13.5	1.60	32		0.053	50	2.65	180	17.00
i0008983	P1108-A 2PIECE CLAMP 10,5 - 14,0MM PG	Pair	10.5 - 14	1.60	32		0.053	50	2.65	180	17.00
i0008982	P2027 2PIECE CLAMP 14,5 - 16,5MM PG	Pair	14.5 - 16.5	1.60	32		0.055	50	2.75	180	17.00
i0008981	P1109 2PIECE CLAMP 16,0 - 18,5MM PG	Pair	16 - 18.5	1.60	32		0.056	50	2.80	180	17.00
i0008980	P2028 2PIECE CLAMP 17,0 - 19,5MM PG	Pair	17 - 19.5	1.60	32		0.059	50	2.95	180	17.00
i0008979	P1111 2PIECE CLAMP 21,0 - 25,5MM PG	Pair	21 - 25.5	1.60	32	i0001302 M6 x 25mm Gutter Bolt & Nut EG Required	0.060	50	3.00	180	17.00
i0008978	P2030 2PIECE CLAMP 25,5 - 28,0MM PG	Pair	25.5 - 28	2.00	32		0.081	25	2.03	270	22.00
i0008977	P1112 2PIECE CLAMP 27,0 - 30,0MM PG	Pair	27 - 30	2.00	32		0.083	25	2.08	270	23.00
i0008976	P2032 2PIECE CLAMP 30,0 - 33,5MM PG	Pair	30 - 33.5	2.00	32	i0001303 M6 x 30mm Gutter Bolt & Nut EG Required	0.087	25	2.18	270	24.00
i0008975	P1113 2PIECE CLAMP 32,0 - 36,0MM PG	Pair	32 - 36	2.00	32		0.089	25	2.23	270	25.00
i0008974	P2034 2PIECE CLAMP 35,0 - 40,0MM PG	Pair	35 - 40	2.00	32		0.094	25	2.35	270	27.00
i0008973	P1114 2PIECE CLAMP 38,0 - 44,0MM PG	Pair	38 - 44	2.00	32		0.101	25	2.53	270	28.00
i0008632	P1115 2PIECE CLAMP 45,0 - 51,0MM PG	Pair	45 - 51	2.50	32	i0001339 M8 x 35mm Hex Set Screw EG & i0001308 M8 Hex Nut EG Required	0.146	20	2.92	360	40.00
i0008972	P2038 2PIECE CLAMP 49,0 - 52,0MM PG	Pair	49 - 52	2.50	32		0.151	20	3.02	360	41.00
i0008971	P2039 2PIECE CLAMP 51,0 - 56,0MM PG	Pair	51 - 56	2.50	32		0.174	20	3.48	360	42.00
i0008631	P1117 2PIECE CLAMP 54,0 - 70,0MM PG	Pair	54 - 70	2.50	32		0.185	20	3.70	360	46.00
i0008970	P2043 2PIECE CLAMP 62,0 - 75,0MM PG	Pair	62 - 75	2.50	32	i0001341 - M8 x 40mm Hex Set Screw EG & i0001308 - M8 Hex Nut EG Required	0.195	20	3.90	360	50.00
i0008630	P1118 2PIECE CLAMP 71,0 - 85,0MM PG	Pair	71 - 85	2.50	32		0.211	15	3.17	360	52.00
i0008629	P1119 2PIECE CLAMP 87,0 - 95,0MM PG	Pair	87 - 95	2.50	32		0.227	15	3.41	360	54.00
i0001891	P1120 2PIECE CLAMP 99 - 110MM PG	Pair	99 - 110	2.50	32	i0001354 - M10 x 50mm Hex Set Screw EG & i0001311 - M10 Hex Nut EG Required	0.276	15	4.14	360	65.00
i0001892	P1121 2PIECE CLAMP 110 - 122MM PG	Pair	110 - 122	2.50	32		0.298	15	4.47	360	71.00
i0001893	P1122 2PIECE CLAMP 116 - 140MM PG	Pair	116 - 140	2.50	32		0.317	10	3.17	360	76.00
i0001894	P1123 2PIECE CLAMP 135 - 145MM PG	Pair	135 - 145	2.50	32		0.328	10	3.28	360	79.00
i0001895	P1124 2PIECE CLAMP 141 - 175MM PG	Pair	141 - 175	3.00	32	i0001355 - M10 x 60mm Hex Set Screw EG & i0001311 - M10 Hex Nut EG Required	0.439	10	4.39	360	102.00
i0001896	P1125 2PIECE CLAMP 160 - 200MM PG	Pair	160 - 200	3.00	32		0.325	50	16.24	360	114.00
i0001897	P1126 2PIECE CLAMP 196 - 230MM PG	Pair	196 - 230	3.00	32		0.376	25	9.39	360	124.00
i0001898	P1127 2PIECE CLAMP 225 - 270MM PG	Pair	225 - 270	3.00	32		0.457	25	11.42	360	138.00
i0001899	P1129 2PIECE CLAMP 245 - 280MM PG	Pair	245 - 280	3.00	32		0.484	25	12.10	360	147.00

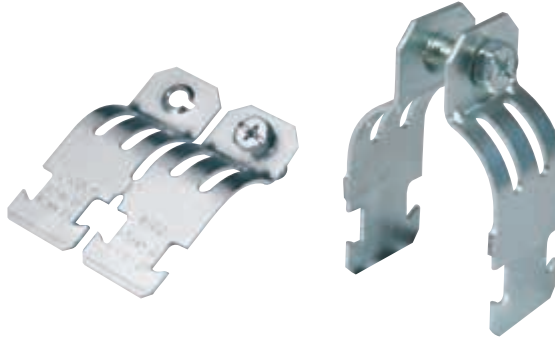
For Fasteners
Please See Page 67

PIPE & CABLE CLAMPS

JULY 2021

TP 2/Piece Clamps

Supplied as one piece Including fastener
Designed for use with Cab-Strut channel
Practical range of thirteen convenient sizes
Body and screw galvanised (EG)
Design load 200kg (safety factor of 5)
Suitable for pipework and cables



Supplied complete with Fastener shown in table below

Product Code	Description	Unit	Pipe Ø Clamping Range (mm)	Material Thickness (mm)	Clamp Width (mm)	Supplied complete with Fastener shown in table below	Weight Kgs/Set	Pack/Box Quantity	Weight Kgs Pack/Box	Design Load (Kgs) perSet	Unit Price
i0002345	TP015/020 2/PIECE CLAMP 15-20MM EG	Set	15 - 20	1.60	32	Slotted Hex Set Screw M6 x 20mm	0.043	100	4.28	200	19.00
i0002346	TP020/025 2/PIECE CLAMP 20-25MM EG	Set	20 - 25	1.60	32		0.047	100	4.68	200	23.00
i0002347	TP025/030 2/PIECE CLAMP 25-30MM EG	Set	25 - 30	1.60	32		0.053	100	5.28	200	24.00
i0002348	TP030/040 2/PIECE CLAMP 30-40MM EG	Set	30 - 40	2.00	32	Slotted Hex Set Screw M6 x 25mm	0.073	50	3.66	200	33.00
i0002349	TP040/050 2/PIECE CLAMP 40-50MM EG	Set	40 - 50	2.00	32	Slotted Hex Set Screw M8 x 25mm	0.095	50	4.76	200	36.00
i0002350	TP050/060 2/PIECE CLAMP 50-60MM EG	Set	50 - 60	2.00	32		0.108	50	5.42	200	43.00
i0002351	TP060/070 2/PIECE CLAMP 60-70MM EG	Set	60 - 70	2.00	32		0.115	50	5.74	200	47.00
i0002352	TP070/080 2/PIECE CLAMP 70-80MM EG	Set	70 - 80	2.50	32		0.154	50	7.70	200	59.00
i0002353	TP080/090 2/PIECE CLAMP 80-90MM EG	Set	80 - 90	2.50	32		0.170	50	8.50	200	65.00
i0002354	TP090/100 2/PIECE CLAMP 90-100MM EG	Set	90 - 100	2.50	32	Slotted Hex Set Screw M8 x 30mm	0.176	25	4.40	200	68.00
i0002355	TP100/110 2/PIECE CLAMP 100-110MM EGSet	Set	100 - 110	2.50	32		0.199	25	4.98	200	73.00
i0004231	TP110/120 2/PIECE CLAMP 110-120MM EGSet	Set	110 - 120	2.50	32		0.212	25	5.30	200	77.00
i0004232	TP120/130 2/PIECE CLAMP 120-130MM EGSet	Set	120 - 130	2.50	32		0.224	25	5.60	200	81.00

Cabstrut Strap Clamps

Product Code	Description	Unit	Pipe Ø Clamping Range (mm)	Strap Length (mm)	Thread Size	M10 Stud Nut Length (mm)	Weight Kgs/Set	Pack/Box Quantity	Weight Kgs Pack/Box	Unit Price
i0004226	STRAP CLAMP SET 075-100MM EG	Set	75 - 100	160	M10	85	0.282	20	5.64	124.00
i0004227	STRAP CLAMP SET 100-125MM EG	Set	100 - 125	200	M10	95	0.299	20	5.97	130.00
i0004228	STRAP CLAMP SET 125-150MM EG	Set	125 - 150	230	M10	115	0.326	20	6.51	135.00
i0004229	STRAP CLAMP SET 150-175MM EG	Set	150 - 175	295	M10	120	0.351	20	7.02	141.00
i0004230	STRAP CLAMP SET 175-200MM EG	Set	175 - 200	325	M10	135	0.375	20	7.49	147.00



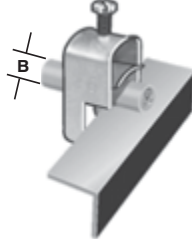
Supplied with strap, studs, nuts, washers and collets
Designed for use with Cabstrut channel
Practical range of four convenient straps which are fully adjustable and offer a very flexible range

of sizes
Strap, studs, nuts, washers and collets galvanised (EG)
Suitable for large diameter poles and pipes

Cabstrut "Q" Clamps - SG Galvanised



Cable Ladder Cross Rung



Angle Iron



CAB-STRUT Channel



Wire Mesh Tray

Light & strong
Body galvanised SG
Screw galvanised SG
One common clamp for all applications
For Stainless Steel "Q"
Clamp prices please see Cabstrut Stainless Steel Price List

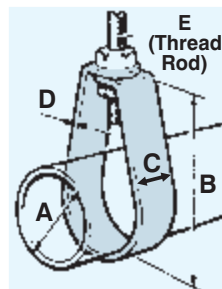
Product Code	Description	Unit	Clamp Thickness (mm)	Bolt Size	Weight Kgs/Set	Pack/Box Quantity	Weight Kgs Pack/Box	Unit Price
i0001916	Q16MM QCLAMP 16MM "Q"CLAMP SG	ea	1.50	M6	0.038	100	3.78	30.00
i0001917	Q20MM QCLAMP 20MM "Q"CLAMP SG	ea	1.50	M6	0.043	100	4.31	33.00
i0001918	Q26MM QCLAMP 26MM "Q"CLAMP SG	ea	1.50	M6	0.051	50	2.57	35.00
i0001919	Q32MM QCLAMP 32MM "Q"CLAMP SG	ea	1.50	M6	0.060	50	3.02	41.00
i0001920	Q40MM QCLAMP 40MM "Q"CLAMP SG	ea	2.00	M8	0.091	50	4.57	55.00
i0001921	Q46MM QCLAMP 46MM "Q"CLAMP SG	ea	2.00	M8	0.099	50	4.95	57.00
i0001922	Q52MM QCLAMP 52MM "Q"CLAMP SG	ea	2.00	M8	0.109	50	5.47	64.00
i0001923	Q58MM QCLAMP 58MM "Q"CLAMP SG	ea	2.00	M8	0.119	50	5.94	70.00
i0001924	Q66MM QCLAMP 66MM "Q"CLAMP SG	ea	2.00	M8	0.133	50	6.67	72.00
i0001925	Q70MM QCLAMP 70MM "Q"CLAMP SG	ea	2.00	M8	0.142	50	7.09	77.00
i0001926	Q78MM QCLAMP 78MM "Q"CLAMP SG	ea	2.00	M8	0.157	50	7.87	81.00

P75 Hanger Clamps

Standard finish galvanised (PG)
Fasteners (EG)
Suitable for hanging plumbing, drainage and sprinkler pipes



Product Code	Description	Unit	Material Thickness (mm)	Pipe ID (NB) "A"	Pipe Ø (mm) "B"	Clamp Width (mm) "C"	Overall Length of Clamp (mm) "D"	Threaded Rod Hole Ø (mm)	Weight Kgs /Unit	Pack /Box Quantity	Weight Kgs Pack /Box	Unit Price
i0001904	P75/015 PIPE HANGER NB 15MM EG	ea	1.60	15	21	25	82	11	0.067	100	6.74	18.00
i0001905	P75/020 PIPE HANGER NB 20MM EG	ea	1.60	20	27	25	85	11	0.070	100	7.00	19.00
i0001906	P75/025 PIPE HANGER NB 25MM EG	ea	1.60	25	34	25	89	11	0.074	100	7.39	20.00
i0001907	P75/032 PIPE HANGER NB 32MM EG	ea	1.60	32	42	25	98	11	0.081	100	8.14	23.00
i0001908	P75/040 PIPE HANGER NB 40MM EG	ea	1.60	40	48	25	100	11	0.085	100	8.48	24.00
i0001909	P75/050 PIPE HANGER NB 50MM EG	ea	1.60	50	60	25	119	11	0.093	100	9.33	28.00
i0001910	P75/065 PIPE HANGER NB 65MM EG	ea	2.00	65	76	32	132	14	0.190	50	9.52	46.00
i0001911	P75/080 PIPE HANGER NB 80MM EG	ea	2.00	80	89	32	148	14	0.211	50	10.57	51.00
i0001912	P75/100 PIPE HANGER NB 100MM EG	ea	2.50	100	114	32	176	14	0.313	50	15.67	75.00
i0001913	P75/125 PIPE HANGER NB 125MM EG	ea	3.00	125	140	40	297	14	0.713	20	14.25	180.00
i0001914	P75/150 PIPE HANGER NB 150MM EG	ea	3.00	150	168	40	310	14	0.764	20	15.27	211.00
i0001915	P75/200 PIPE HANGER NB 200MM EG	ea	3.00	200	219	40	320	14	0.840	10	8.40	237.00

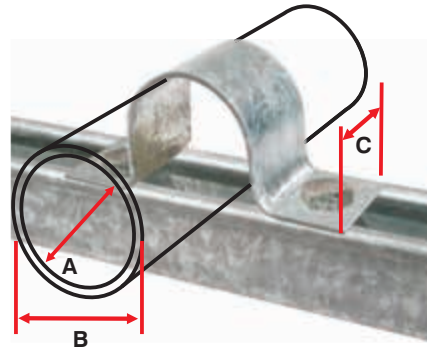


PIPE & CABLE CLAMPS

JULY 2021

Light Duty Saddle Clamps

Standard finish galvanised (PG) Fasteners not included (see page 67)



Product Code	Description	Unit	Material Thickness (mm)	Pipe ID (NB) (mm) "A"	Pipe Ø (mm) "B"	Clamp Width (mm) "C"	Clamp Overall Length (mm)	Hole Ø (mm)	Weight Kgs /Unit	Pack /Box Quantity	Weight Kgs Pack /Box	Unit Price
i0002312	SS1 L/DUTY SADDLE CLAMP 21MM PG	ea	0.80	15	21	40	48	7	0.019	100	1.91	10.00
i0002313	SS1/01 L/DUTY SADDLE CLAMP 26MM PG	ea	0.80	20	27	40	76	7	0.022	100	2.20	12.00
i0002314	SS1/02 L/DUTY SADDLE CLAMP 34MM PG	ea	1.00	25	34	40	84	7	0.026	100	2.60	15.00
i0002315	SS1/03 L/DUTY SADDLE CLAMP 42MM PG	ea	1.00	32	42	40	92	7	0.045	50	2.27	17.00
i0002316	SS1/04 L/DUTY SADDLE CLAMP 48MM PG	ea	1.00	40	48	40	98	7	0.050	50	2.52	19.00
i0002317	SS1/05 L/DUTY SADDLE CLAMP 60MM PG	ea	1.00	50	60	40	110	7	0.060	50	2.98	21.00
i0002318	SS1/06 L/DUTY SADDLE CLAMP 76MM PG	ea	1.00	65	76	40	126	7	0.073	50	3.65	24.00
i0002319	SS1/07 L/DUTY SADDLE CLAMP 88MM PG	ea	1.20	80	89	40	138	9	0.089	50	4.43	29.00
i0002320	SS1/08 L/DUTY SADDLE CLAMP 101MM PG	ea	1.20	-	114	40	151	9	0.094	50	4.70	32.00
i0002321	SS1/09 L/DUTY SADDLE CLAMP 114MM PG	ea	2.00	100	140	40	164	9	0.208	25	5.20	43.00
i0002960	SS1/10 L/DUTY SADDLE CLAMP 142MM PG	ea	2.00	125	168	40	192	9	0.256	25	6.41	69.00
i0002322	SS1/11 L/DUTY SADDLE CLAMP 173MM PG	ea	2.00	-	173	40	223	9	0.292	25	7.30	82.00
i0004204	SS1/12 L/DUTY SADDLE CLAMP 225MM PG	ea	2.00	200	219	40	275	9	0.386	25	9.65	102.00

Aluminium Trefoil Clamps

No magnetic circuit can be created in aluminium Trefoil clamps can withstand a rupturing capacity of 95kA at 750mm spacings

Product Code	Description	Unit	Cable Ø (mm) "A"	Aluminium Clamp Thickness (mm)	HDG 2.0mm Bottom Plate Length (mm)	Weight Kgs /Set	Pack /Box Qty	Weight Kgs Pack /Box	Unit Price
i0002356	TR-30 ALUMINIUM TREFOIL CLAMP SET	Set	30	4.50	120	0.181	75	13.54	230.00
i0002357	TR-37 ALUMINIUM TREFOIL CLAMP SET	Set	37	4.50	149	0.208	50	10.38	250.00
i0002358	TR-42 ALUMINIUM TREFOIL CLAMP SET	Set	42	4.50	174	0.254	50	12.68	290.00
i0002359	TR-48 ALUMINIUM TREFOIL CLAMP SET	Set	48	4.50	174	0.261	50	13.06	308.00
i0002360	TR-53 ALUMINIUM TREFOIL CLAMP SET	Set	53	4.50	199	0.289	50	14.46	327.00
i0004235	TR-57 ALUMINIUM TREFOIL CLAMP SET	Set	57	4.50	199	0.298	50	14.90	333.00
i0002361	TR-63 ALUMINIUM TREFOIL CLAMP SET	Set	63	4.50	224	0.344	30	10.31	340.00

